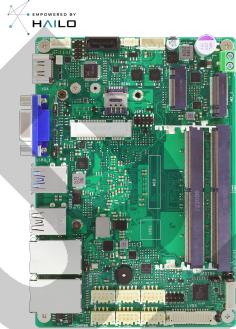


## BIELK-PAT 工業電腦



- Intel® Elkhart Lake Processor
- Supports triple display: LVDS(eDP), 1xHDMI®, 1x VGA
- Support 2 x DDR4 3200 MHz SO-DIMM, up to 32GB
- Support M.2 Hailo-8™ AI Accelerator, up to 26 TOPS (option)
- 2 x Intel i226 2.5GbE LAN
- 2 x USB3.2 Gen1, 4 x USB2.0
- 2 x RS232/422/485, 2 x RS232
- 1x M.2 B key 3042/3052 support USB3.2+PCIe3.0 x1 w/ SIM slot for 4G/5G module
- 1x M.2 M key 2242/2280 support PCIe3.0 x2/ SATA for NVMe/ SATA storage
- 1x Mini PCIe, support PCIe3.0x1 +USB2.0 for WIFI/BT module
- Support wide range temperature -40 ~ 85 degree C
- DC\_IN 9~24V

### Specification

CPU SUPPORT	Intel® Elkhart Lake Processor Intel Celeron J6412 Intel Atom x6413E (wide range temperature support)
MEMORY	2 x DDR4-3200 MHz SO-DIMM Slot, up to 32G
EXPANSION SLOT	1 x M.2 B key 3042/3052 support PCIe3.0 x1 + USB3.2 w/ SIM slot for 4G/5G module 1 x M.2 M Key 2242/2280 support PCIe3.0 x2/ SATA for NVMe/ SATA storage 1 x Mini PCIe support PCIe3.0 x1 +USB2.0 for WIFI/BT module
GRAPHICS	Intel® Integrated Graphics, support triple display - 1 x HDMI® connector (4096x2160@60Hz) - 1 x VGA connector (1920x1200 @60Hz, not support wide temperature) - 1x LVDS/eDP (1920x1200 @60Hz, LVDS/eDP switch mode by BIOS)
AUDIO	Audio Codec: ALC897 + ALC105, support 4 ohm 2W amplifier ( not support wide temperature)
LAN	Dual 2.5GbE LAN 2 x Intel i226-V 2 x Intel i226-IT opt for wide range temperature
SUPER I/O CHIP	ITE IT8786
REAR I/O	1 x HDMI® connector 1 x VGA connector 2 x USB2.0 Type A connector 2 x USB3.2 Gen1 Type A connector 2 x RJ45 connectors, support 2.5G

INTERNAL I/O	<p>Expansion slots:</p> <ul style="list-style-type: none"> <li>- 1 x M.2 M key</li> <li>- 1 x M.2 B key w/ SIM Slot</li> <li>- 1 x Mini PCIe</li> </ul> <p>SATA:</p> <ul style="list-style-type: none"> <li>- 1 x SATA3 7pin connector</li> <li>- 1 x 1*4 pin SATA power box header</li> </ul> <p>Display:</p> <ul style="list-style-type: none"> <li>- 1 x 2*15 pin LVDS/eDP box header (share with the same connector, LVDS/eDP switch mode by BIOS)</li> <li>- 1 x 1*6 pin LCD backlight control box header</li> <li>- 1 x 1*3 pin LCD power select header (3.3V/5V, default is 3.3V)</li> <li>- 1 x 1*3 pin LCD backlight control power select header (5V/12V, default is 12V)</li> </ul> <p>Audio: ( not support wide range temperature)</p> <ul style="list-style-type: none"> <li>- 1 x 2*4 pin header for MIC-in, LINE-out</li> <li>- 1 x 1*4 pin box header for 4 ohm 2W amplifier speaker</li> </ul> <p>USB:</p> <ul style="list-style-type: none"> <li>- 1 x 2*5 pin box header, support 2 x USB2.0</li> </ul> <p>Power:</p> <ul style="list-style-type: none"> <li>- 1 x 1*2 pin phoenix connector , support DC-IN 9~24V</li> </ul> <p>Serial Port:</p> <ul style="list-style-type: none"> <li>- 2 x 2*5 pin RS232/422/485 box header (COM1/COM2)</li> <li>- 2 x 2*5 pin RS232 box header (COM3/COM4)</li> <li>- 2 x 1*3 pin COM1/COM2 power select header (NC/5V/12V, default is NC)</li> </ul> <p>Others:</p> <ul style="list-style-type: none"> <li>- 1 x buzzer ( not support wide range temperature)</li> <li>- 1 x 2*5 8-bit DIO pin header</li> <li>- 1 x 1*3 pin CPU Fan header</li> <li>- 1 x 1*3 pin clear CMOS header</li> <li>- 1 x 1*3 pin DIO power select header (3.3V/5V, default is 5V)</li> <li>- 1 x 1*3 pin USB3_1 power select header( 5V/5VSB, default is 5VSB)</li> <li>- 1 x 2*5 front panel box header</li> <li>- 2 x Power LED onboard for APCI power status</li> <li>- 1 x 1*3 AT/ATX mode switch pin header (default is ATX)</li> </ul>
DIMENSION	148 x 102 x 1.6 mm
ENVIRONMENT	0°C ~ 60°C Humidity : 5% ~ 90% Wide range temperature: -40°C ~ 85°C Humidity : 5% ~ 90% (opt)
OS SUPPORT	Support Windows 10 IoT Enterprise 2019(1809)/ 21H2 Support Ubuntu 20.04

\*The specification and pictures are subject to change without notice and the package contents may differ by area or your motherboard version!



Biostar International Corp.