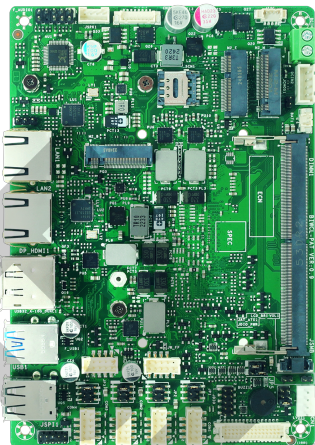


BIWCL-PAT 工業電腦



- Intel® Core 3 304/305, Core 5 315/320/330, Core 7 350/360
- Supports Support Triple display: LVDS /1xHDMI®/1xDP
- Support DDR5-6400MHZ SO-DIMM, max 64GB
- 2 x Intel i226 2.5G LAN
- 2 x USB3.2 Gen1, 4 x USB2.0
- 2 x RS232/422/485, 2 x RS232
- 1x M.2 B key 3042/3052 support PCIe4.0 x1 + USB3.2 w/ SIM slot for 4G/5G module
- 1x M.2 M key 2242/2280 support PCIe4.0 x2 for NVMe storage
- 1x M.2 E key 2230 support PCIe4.0 x1 +USB2.0 for WIFI/BT module
- DC-IN 9~24V

Specification

CPU SUPPORT	Intel® Wildcat Lake Processor Intel® Core 3 304/ 305 Intel® Core 5 315/ 320/ 330 Intel® Core 7 350/ 360
MEMORY	1 x 262-pin DDR5-6400Mhz SO-DIMM, up to 64GB
EXPANSION SLOT	1 x M.2 B key 3042/3052 support PCIe4.0 x1 + USB3.2 w/ SIM slot for 4G/5G module 1 x M.2 M Key 2242/ 2280 support PCIe4.0x2 storage 1 x M.2 E key 2230 support PCIe4.0 x1 +USB2.0 for WIFI/BT module
GRAPHICS	Intel® Integrated Graphics, support triple display - 1 x HDMI® 2.1 connector (3840*2160 @60H) - 1 x DP1.4 (4096 x 2160@120Hz) - 1 x LVDS (1920x1200@60Hz)
AUDIO	Audio Codec: ALC897 w/ ALC105, support 4 ohm 2W amplifier
LAN	Dual 2.5GbE 2 x Intel i226-V
SUPER I/O CHIP	IT8786E-I
REAR I/O	1 x HDMI® connector 1 x DP connector 2 x USB3.2 Gen1 Type A connector 2 x USB2.0 connector 2 x RJ45 connectors, support 2.5G

INTERNAL I/O	<p>Expansion slots:</p> <ul style="list-style-type: none"> - 1 x M.2 M key - 1 x M.2 B key w/ SIM Slot - 1 x M.2 E key <p>Display:</p> <ul style="list-style-type: none"> - 1 x 2*15 pin LVDS box header - 1 x 1*8 pin LCD backlight control box header (5V/12V) - 1 x 2*3 pin LCD power select header (3.3V/5V/12V, default is 3.3V) <p>Audio:</p> <ul style="list-style-type: none"> - 1 x 2*5 pin box header for MIC-in, Line-out, Line-in - 1 x 1*4 pin box header for 4 ohm 2W amplifier speaker <p>USB:</p> <ul style="list-style-type: none"> - 1 x 2*5 pin header, support 2 x USB2.0 <p>Power:</p> <ul style="list-style-type: none"> - 1 x 1*4 pin connector , support DC-IN 9~24V - 1 x 1*2 pin Phoenix connector, support DC-IN 9~24V <p>Serial Port:</p> <ul style="list-style-type: none"> - 2 x 2*5 pin RS232/422/485 box header - 2 x 2*5 pin RS232 box header - 4 x 1*3 pin COM power select header (RI/5V/12V, default is NC) <p>Others:</p> <ul style="list-style-type: none"> - 1 x buzzer - 1 x 2*5 8-bit DIO pin header - 1 x 1*5 pin SMBus header - 1 x 1*4 pin CPU Fan header - 1 x 1*2 pin clear CMOS header - 1 x 1*3 pin DIO power select header (3.3V/5V, default is 3.3V) - 1 x 1*2 pin DIO for volume up / down - 1 x 1*2 pin DIO for LCD brightness up / down - 1 x 2*5 front panel header - 1 x Power LED onboard for APCI power status - 1 x 1*3 pin AT/ATX mode select header (default is ATX) - TPM2.0 onboard
DIMENSION	148 x 102 x 1.6 mm
ENVIRONMENT	0°C ~ 60°C Humidity : 5% ~ 90%
OS SUPPORT	Support Windows 11 IoT Enterprise 24H2 or later version Support Ubuntu 24.04

*The specification and pictures are subject to change without notice and the package contents may differ by area or your motherboard version!



BIOSTAR International Corp.