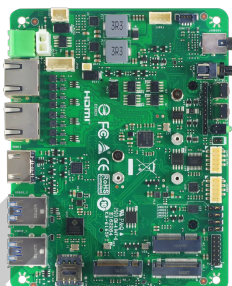


# AI-NONXS NX 16GB Industrial PC



- Support nVidia Jetson Orin NX/NANO series
- HDMI® 2.1
- 2 x MIPI CSI connector
- 1 x GbE & 1 x 2.5GbE (POE opt.)
- 1x M.2 Key-M & 1 x M.2 Key-E & 1 x M.2 Key-B
- 4 x 3.2 USB type A
- 1 x RS232/CAN & 1 x RS232/422/485
- Linux, JetPack 6.2

## Specification

nVidia Module	Jetson Orin NX 16GB
AI Performance	100 TOPS
GPU	1024-core NVIDIA Ampere architecture GPU with 32 Tensor Cores
CPU SUPPORT	8-core Arm® Cortex®-A78AE v8.2 64-bit CPU
Storage	1 x M.2 Key-M PCIe Gen.4 x4 2242/2260/2280 NVMe SSD
MEMORY	16GB 128-bit LPDDR5 102.4GB/s
EXPANSION SLOT	1 x M.2 Key-E for 2230 Wi-Fi & BT module 1 x M.2 Key-B for 3042/3052 4G LTE/5G module 1 x Nano SIM slot
GRAPHICS	HDMI® 2.1
AUDIO	1 x 3.5mm Headset jack with Line-out/MIC-In 1 x digital MIC pin header 1 x speaker out pin header
LAN	1 x GbE (POE opt) 1 x 2.5GbE (POE opt)
REAR I/O	1 x HDMI® 4 x USB 3.2 type A 1 x Micro USB (for OS flash) 1 x RS232/CAN 1 x RS232/422/485
INTERNAL I/O	1 x SATA Connector 1 x Clear CMOS header 1 x 2*8 pin VGA header (colay with DP)
DIMENSION	130mm x 100mm ( W x L )
OS SUPPORT	Support Linux , Jetpack 6.2 Support Jetson Orin NX/Nano modules (Super Mode-enabled)
MIPI Camera	2 x 4-lane MIPI CSI 22-pin connector
External I/O	1 x 14-pin header: SPI, I2C, GND, 3.3V, 5V
Others	1 x 12-pin header: LED, 5V, UART, LATCH (AT/ATX mode switch), GND, RST, RCV, PWR
Fan	1 x 4-pin header

RTC	1 x 2pin header
Security (Opt.)	TPM 2.0
Button	1 x Power On button 1 x Recovery button 1 x Reset button
Power Input Connector	1 x DC Power Jack for 12V~20V 1 x 2-pin internal power connector
Operating temperature	-20~60 °C

\*The specification and pictures are subject to change without notice and the package contents may differ by area or your motherboard version!



BIOSTAR  
BIOSTAR Microtech International Corp.

